

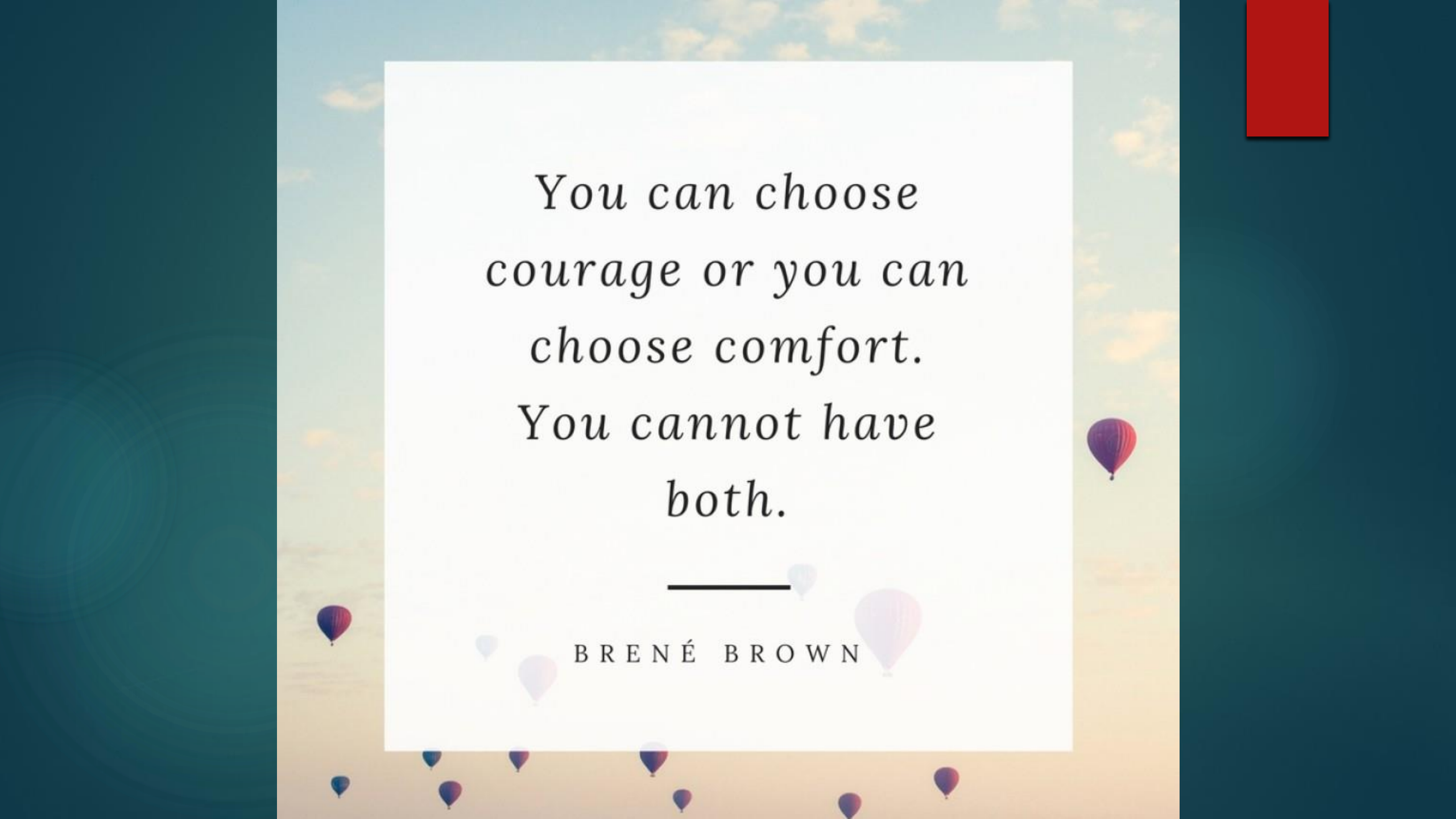


# Implementing A School Based Attendance Improvement Court

HEATHER WAY, WASD SCHOOL SOCIAL WORKER

JUDGE JOY REYNOLDS MCCOY, COURT OF COMMON PLEAS OF LYCOMING COUNTY

ROGER FREED, WAHS PRINCIPAL

The image features a white rectangular card centered on a background of a sunset sky with several hot air balloons. The quote is written in a black, serif font. A solid black horizontal line is positioned below the quote, and the author's name is centered below that line. The background is a gradient from light blue at the top to orange at the bottom, with several hot air balloons in various colors (purple, blue, pink) scattered across the scene. A solid red rectangle is located in the top right corner of the image.

*You can choose  
courage or you can  
choose comfort.  
You cannot have  
both.*

---

BRENÉ BROWN

# GUIDING QUESTIONS

- ▶ How effective is your school district's current system of addressing unlawful absences?
- ▶ What changes would you make to the current system?

# "So What, Now What?" -Linda Cliatt-Wayman

[https://www.ted.com/talks/linda\\_cliatt\\_wayman\\_how\\_to\\_fix\\_a\\_broken\\_school\\_lead\\_fearlessly\\_love\\_hard?language=en](https://www.ted.com/talks/linda_cliatt_wayman_how_to_fix_a_broken_school_lead_fearlessly_love_hard?language=en)

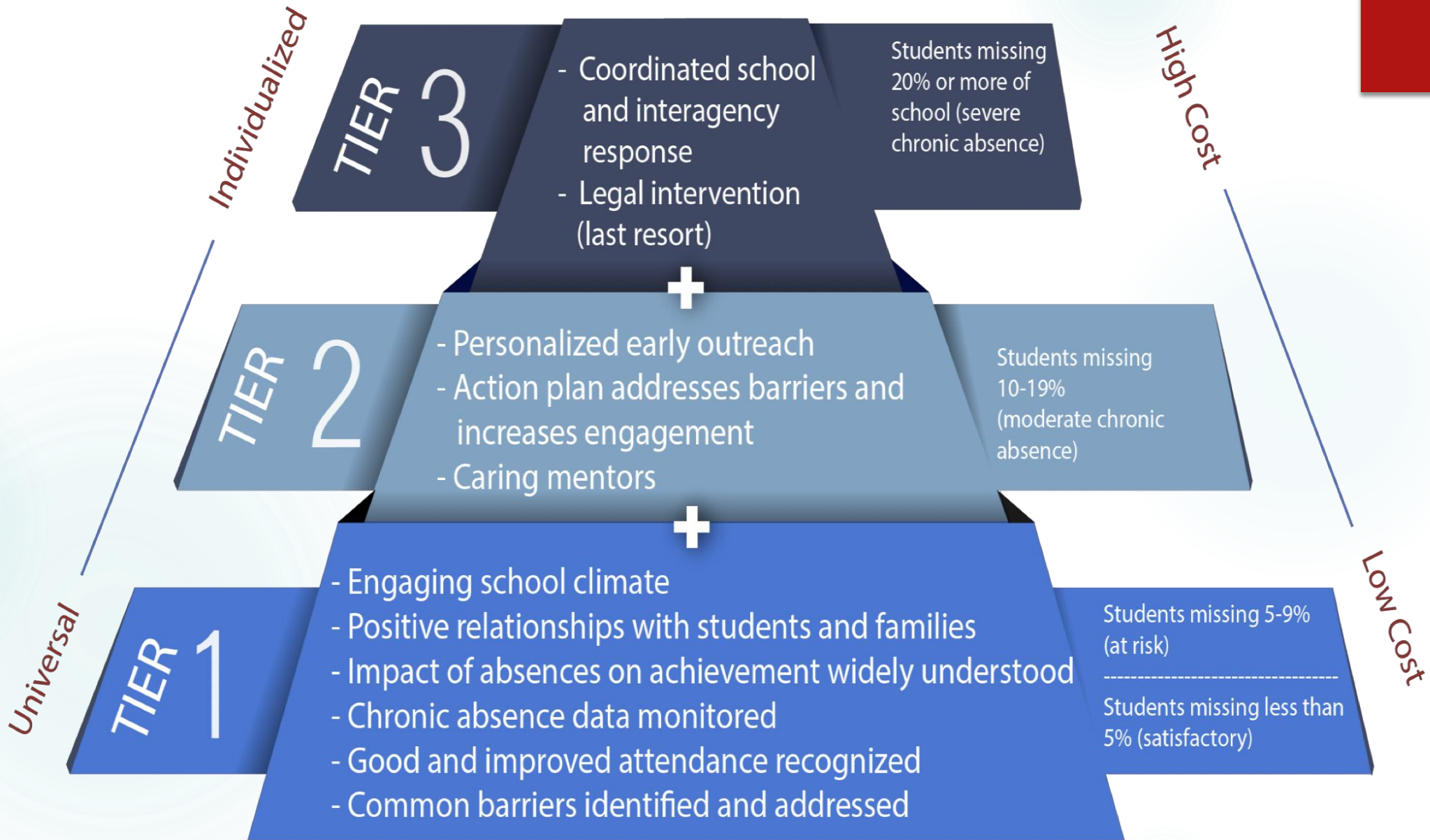
# NOW WHAT?

## *Why WASD initiated a school-based AIC?*

- ▶ Minimize frequency of school social workers serving as attendance officers
- ▶ Need for more collaboration among school personnel as well as interagency collaboration
- ▶ Attendance rates/graduation rates not significantly improving
- ▶ Need for more restorative practice and alternative approach

# WILLIAMSPORT AREA SCHOOL DISTRICT FACTS

- ▶ 5,117 Students in Williamsport School District
- ▶ 1,532 Students at Williamsport High School
- ▶ 65.7% receive free and reduced lunch
- ▶ 14.1% receive special education services
- ▶ Demographics:
  - ▶ 63.8% White; 15.2% Multi-Racial; 15.5% Black; 4.7% Hispanic; 0.8% other
- ▶ 8 Schools
  - ▶ 4 primary (K-3)
  - ▶ 2 intermediate (4-6)
  - ▶ 1 middle school (7-8)
  - ▶ 1 high school



# KEY FACTORS

- ▶ IDENTIFYING APPROPRIATE STUDENTS AND FAMILIES
- ▶ CREATING CONDITIONS OF ACCOUNTABILITY
- ▶ SUPPORTIVE JUDGES
- ▶ Tier 2 or 3 INTERVENTIONS
  - ▶ After school tutoring
  - ▶ Mentoring
  - ▶ School based mental health/drug & alcohol counseling
  - ▶ Counseling groups (ARTS / Skillstreaming Group)
- ▶ INTERAGENCY PARTICIPATION
  - ▶ CHILDREN AND YOUTH SERVICES
  - ▶ JUVENILE PROBATION



# AIC STRUCTURE

- ▶ BI-WEEKLY MEETINGS FROM 11:45-1:30PM AT SCHOOLS
- ▶ 6-8 MEMBERS SERVE ON TEAM DEPENDING ON THE SCHOOL
- ▶ SCHOOL SOCIAL WORKER COLLECTS INFORMATION TO PRESENT AT INITIAL MEETING
- ▶ JUDGE LEADS/FACILITATES MEETING WHILE ENCOURAGE SCHOOL INPUT AND INVOLVEMENT IN THE PLAN

# SCHOOL SOCIAL WORKER ROLE

- ▶ Collaborate with principal, counselor and school outreach worker to identify appropriate students
- ▶ Prepare AIC agenda and send to team
- ▶ Contact families and send AIC invites
- ▶ Coordinate necessary referrals for outside services
- ▶ Collaborate with school personnel and outside agencies to implement plan

# PRINCIPAL'S ROLE

- ▶ Assist with identifying appropriate students
- ▶ Discuss the expectations for both students, parents, and staff
  - ▶ Importance of School Social Worker's maintaining relationship with families
- ▶ Follow up with academic, behavioral and attendance expectations that are developed for students at the AIC Meeting
- ▶ Facilitate funding of incentives that are used through AIC
- ▶ Remove barriers (transportation issues, conflict with other students, conflict with teachers/staff, need of mentors, etc.)
- ▶ Follow up with the teachers of students involved in AIC

# JUDGE'S ROLE


- ▶ Authority to create the program
- ▶ Explain the program and obtain consent of the parent and student (voluntary program)
- ▶ Establish an atmosphere of authority and accountability for student and parent
- ▶ Assist in devising plan to improve student attendance, behavior, and grades
- ▶ Think outside the box while giving deference to the school
- ▶ Hold all participants accountable to follow through with plan implementation

# CONTINUED CHALLENGES

- ▶ IMPROVING SUCCESS RATE
- ▶ TIME CONSTRAINTS
- ▶ IDENTIFYING MORE CREATIVE INTERVENTIONS
- ▶ LIMITED NUMBER OF COMMUNITY RESOURCES AND PROGRAMS
- ▶ PARENT INVOLVEMENT
- ▶ STUDENT RECEPTIVENESS / EARLIER INTERVENTION

# AIC DATA

- ▶ Approximately 60% success rate
- ▶ Future Ready PA Index Percent of Students with regular attendance: 71.4% (2017-2018 School Year)
- ▶ Projected Future Ready PA Index Percent of Students with regular attendance: 79.65% (2018-2019 School Year)



Every time we choose  
courage, we make  
everyone around us a little  
better and the world a little  
braver. And our world  
could stand to be a little  
kinder and braver.

Brene Brown

# QUESTIONS?

## CONTACT INFORMATION

HEATHER WAY

570-220-1589

[hway@wasd.org](mailto:hway@wasd.org)